

SEATED IN HEAVENLY PLACES

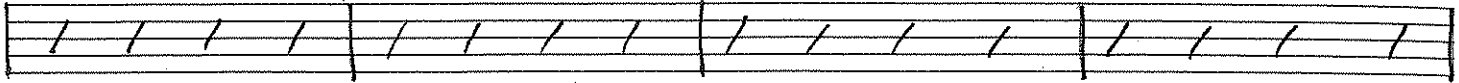
©2007 Melanie Gloeckler

KEY: D

VERSE 1

G

D²/B



G

D²/B

D/F# G



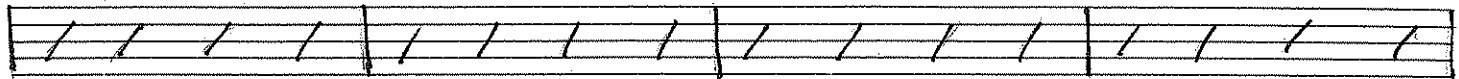
INTERLUDE

A^{sus}

A

G Em⁷ A^{sus}

A



VERSE 2

G

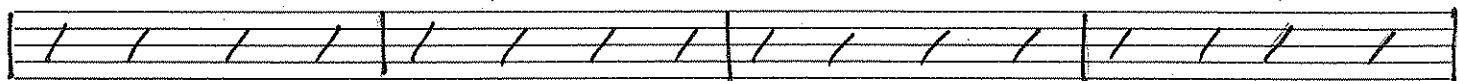
D²/B



G

D²/B

D/F# G



CHORUS

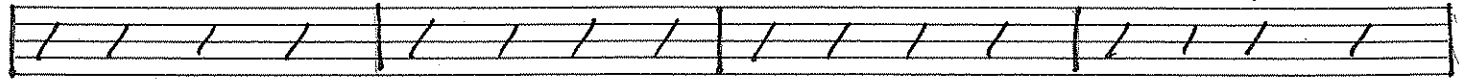
A^{sus}

A

G Em⁷ A^{sus}

A

D/F# G



A^{sus}

A

G Em⁷ D^{sus}

D

(D/F# G)

